

Welcome to the Source Distribution e-catalog!

Click on the arrow buttons to turn the page, or navigate using the left and right cursor keys on your keyboard.



Jump to any product category by clicking the corresponding header on the index page. (pg. 6)

Click the Source Distribution logo in the upper-left corner of any page to return to the index.



SEATING COMPONENT CATALOG

Founded in 1991, Source Distribution is your source for high quality and competitively priced seating components.

We specialize in quality components for a range of markets including medical, industrial, office, hospitality, gaming, display, material handling, and education.

We strive to provide customers with the highest level of service possible. While we offer many standard stock products, we are also able to work with customers to source or manufacture components specific to their needs. Additionally, we offer custom stocking programs tailored to fit customer-specific needs and can provide value-added services such as warehousing, custom powder or wet coating, zinc plating, welding, stamping, laser cutting, assembly, and more.



Grand Rapids, Michigan

Our Mission Statement

Source Distribution is dedicated to the success, prosperity, and advancement of our customers, our suppliers, our employees, and our shareholders. We seek to ensure that all those we do business with are highly satisfied and also benefit from their relationship with us.

Our Vision Statement

Source Distribution aspires to be a world-class organization of the highest caliber.

Our Guiding Principles

Quality

We work to provide our customers with the finest quality products and services possible.

Service

We work to treat each customer as if they were our only customer, creating valuable and long-lasting relationships.

Passion

We work to create an environment in which all of our employees can realize their full potential and can challenge themselves and one another.

Environmental Responsibility

We work to pursue growth in harmony with the environment, recycling, and reducing waste whenever and wherever possible.

Social Responsibility

We work to improve our local, regional, and international community.

Arms

pg. 7 - 13

- Loop Arms
- Adjustable Arms
- Arm Pads

Bases

pg. 14 - 26

- Plastic
- Aluminum
- Specialty

Casters & Glides

pg. 27 - 54

- Chair & Stool Casters
- Furniture Casters
- Chair & Table Glides

Foot Rings

pg. 55 - 56

- Standard
- Twist-Lock
- Round & Oval Tube

Gas Lifts

pg. 57 - 61

- Standard
- Non-Rotating
- Spin Lifts
- Lift Covers

Mechanisms

pg. 62 - 71

- Seat Plates
- Tilt Control Mechanisms
- Seat Sliders

Swivels

pg. 72 - 76

- Standard
- Furniture
- Auto-Return

Other

pg. 77 - 93

- Levers & Handles
- Bushings & Adapters
- Back Uprights
- Seats & Backs
- Side Chairs
- Accessories

S3676-2 LOOP ARM

- Polypropylene
- Four mounting holes
- Includes plastic caps
- Black



S5373 LOOP ARM

- Polypropylene
- Four mounting holes
- Includes plastic caps
- Black



S4649-A POLYURETHANE LOOP ARM

- Polyurethane
- Three-slot mounting bracket
- Universal (no right or left)
- Black



S5397 ADJUSTABLE ARM

- Side knob for vertical adjustment range of 3" (76mm)
- 4" (100mm) mounting hole pattern for arm pads
- Arm pad pivot adjustment range of 70°
- Three-slot mounting bracket
- Universal (no right or left)
- 100° angle
- Black



S4761 ADJUSTABLE ARM

- Push button for vertical adjustment range of 2.5" (63mm)
- 4" (100mm) arm pad mounting hole pattern
- Three-slot mounting bracket
- Push button for fold-back adjustment
- 100° angle
- Black



S5402 ADJUSTABLE ARM

- Includes pre-installed arm pad
- Side knob for vertical adjustment range of 3.2" (80mm)
- Three-slot mounting bracket
- Arm pad pivot adjustment range of 40°
- Arm pad front-to-back adjustment range of 1.6" (40mm)
- Arm pad side-to-side adjustment range of 1.1" (28mm)
- 100° angle
- Black



S2877-97 ADJUSTABLE ARM

- Includes six-hole mounting bracket and hand wheel for horizontal adjustment range of 2" (50mm)
- Side knob for vertical adjustment range of 2" (50mm)
- 4" (100mm) mounting hole pattern for arm pads
- Universal (no right or left)
- 97° angle
- Black



S2877 ADJUSTABLE ARM

- Includes six-hole mounting bracket and hand wheel for horizontal adjustment range of 2" (50mm)
- Side knob for vertical adjustment range of 2" (50mm)
- 4" (100mm) mounting hole pattern for arm pads
- Universal (no right or left)
- 102° angle
- Black



S2724-3 ARM PAD

- Polyurethane
- 4" (100mm) wide
- 10" (254mm) long
- 4" (100mm) mounting hole pattern
- Black



S1697-1 ARM PAD

- Polyurethane
- 3" (76mm) wide
- 9.5" (241mm) long
- 4" (100mm) mounting hole pattern
- Black



S5280 ARM PAD

- Polyurethane
- 3.6" (91mm) wide
- 9.25" (235mm) long
- 4" (100mm), 4.75" (121mm), and 5.6" (142mm) mounting hole patterns
- Black



S4624-1 ARM PAD

- Polyurethane
- 3.6" (92mm) wide
- 10" (254mm) long
- 4" (100mm) mounting hole pattern
- Diamond holograph pattern on top surface
- Black



S5398 ARM PAD

- Polyurethane
- 3.5" (89mm) wide
- 11.25" (289mm) long
- 4" (100mm) and 5.1" (130mm) mounting hole pattern
- Black



S3658 ARM PAD

- Polyurethane
- 2.25" (57mm) wide
- 10.75" (273mm) long
- 4.3" (110mm) mounting hole pattern
- Mounts to 1" tube frame
- Black



S4123 24" PLASTIC BASE

- 24" (610mm) overall diameter
- 22" (558mm) caster socket diameter
- 2" (50mm) center hub
- 45mm caster barrels
- 7/16" x 1" (11x25mm) caster sockets
- 3" (75mm) overall base height



S4125 26" PLASTIC BASE

- 26" (660mm) overall diameter
- 24" (609mm) caster socket diameter
- 2" (50mm) center hub
- 42mm caster barrels
- 7/16" x 1" (11x25mm) caster sockets
- 3" (75mm) overall base height



S4121-1 28" PLASTIC BASE

- 28" (710mm) overall diameter
- 26" (660mm) caster socket diameter
- 2" (50mm) center hub
- 45mm caster barrels
- 7/16" x 1" (11x25mm) caster sockets
- 3" (75mm) overall base height



S4147 24" PLASTIC BASE

- 24" (610mm) overall diameter
- 22" (558mm) caster socket diameter
- 2" (50mm) center hub
- 42mm caster barrels
- 7/16" x 1" (11x25mm) caster sockets
- 3" (75mm) overall base height



S4163 28" PLASTIC BASE

- 28" (710mm) overall diameter
- 26" (660mm) caster socket diameter
- 2" (50mm) center hub
- 42mm caster barrels
- 7/16" x 1" (11x25mm) caster sockets
- 3.4" (85mm) overall base height



S4265 25.5" PLASTIC BASE

- 25.5" (650mm) overall diameter
- 24" (612mm) caster socket diameter
- 2" (50mm) center hub
- 45mm caster barrels
- 7/16" x 1" (11x25mm) caster sockets
- 3" (75mm) overall base height



S5053 27.5" HIGH ARCHED PLASTIC BASE

- 27.5" (700mm) overall diameter
- 26" (660mm) caster socket diameter
- 2" (50mm) center hub
- 26mm caster barrels
- 7/16" x 1" (11x25mm) caster sockets
- 4.8" (122mm) overall base height



S4050 23.5" ALUMINUM BASE w/ 50MM HUB

- 23.5" (600mm) overall diameter
- 22.5" (572mm) caster socket diameter
- 2" (50mm) center hub
- 7/16" x 1" (11x25mm) caster sockets
- 2.5" (65mm) overall base height
- Polished top with unpainted underside
- Available with 45mm and 1" hub and alternate finishes



S4154 23.5" ALUMINUM BASE w/ 50MM HUB

- 23.5" (600mm) overall diameter
- 22.5" (572mm) caster socket diameter
- 2" (50mm) center hub
- 7/16" x 1" (11x25mm) caster sockets
- 2.5" (65mm) overall base height
- Polished top with black underside
- Available with 45mm and 1" hub and alternate finishes



S4266 23.5" ALUMINUM BASE w/ 50MM HUB

- 23.5" (600mm) overall diameter
- 22.5" (572mm) caster socket diameter
- 2" (50mm) center hub
- 7/16" x 1" (11x25mm) caster sockets
- 2.5" (65mm) overall base height
- Black
- Available with 45mm and 1" hub and alternate finishes



S5066 23.5" ALUMINUM BASE w/ 1" HUB

- 23.5" (600mm) overall diameter
- 22.5" (572mm) caster socket diameter
- 1" (25.4mm) center hub
- 1/4-20 threaded hole in side of hub for set screw
- 7/16" x 1" (11x25mm) caster sockets
- 2.5" (65mm) overall base height
- Polished top with unpainted underside
- Available with 45mm and 50mm hub and alternate finishes



S5067 23.5" ALUMINUM BASE w/ 1" HUB

- 23.5" (600mm) overall diameter
- 22.5" (572mm) caster socket diameter
- 1" (25.4mm) center hub
- 1/4-20 threaded hole in side of hub for set screw
- 7/16" x 1" (11x25mm) caster sockets
- 2.5" (65mm) overall base height
- Polished top with black underside
- Available with 45mm and 50mm hub and alternate finishes



S5378 23.5" ALUMINUM BASE w/ 45MM HUB

- 23.5" (600mm) overall diameter
- 22.5" (572mm) caster socket diameter
- 1.8" (45mm) center hub
- 7/16" x 1" (11x25mm) caster sockets
- 2.5" (65mm) overall base height
- Brushed aluminum with unpainted underside
- Available with 1" and 50mm hub and alternate finishes



S3803 26" ALUMINUM BASE

- 26" (660mm) overall diameter
- 24.3" (616mm) caster socket diameter
- 2" (50mm) center hub
- 44mm caster barrels
- 7/16" x 1" (11x25mm) caster sockets
- 3.2" (80mm) overall base height
- Polished aluminum



S4164 27.5" ALUMINUM BASE

- 27.5" (700mm) overall diameter
- 25.8" (656mm) caster socket diameter
- 2" (50mm) center hub
- 44mm caster barrels
- 7/16" x 1" (11x25mm) caster sockets
- 3.2" (80mm) overall base height
- Polished aluminum



S4205-2 26" ALUMINUM BASE

- 26" (660mm) overall diameter
- 24.3" (616mm) caster socket diameter
- 2" (50mm) center hub
- 44mm caster barrels
- 7/16" x 1" (11x25mm) caster sockets
- 3.2" (80mm) overall base height
- Black



S4180-2 27.5" ALUMINUM BASE

- 27.5" (700mm) overall diameter
- 25.8" (656mm) caster socket diameter
- 2" (50mm) center hub
- 44mm caster barrels
- 7/16" x 1" (11x25mm) caster sockets
- 3.2" (80mm) overall base height
- Black



S4429 26" ALUMINUM BASE

- 26" (656mm) overall diameter
- 24" (610mm) caster socket diameter
- 2" (50mm) center hub
- 42mm caster barrels
- 7/16" x 1" (11x25mm) caster sockets
- 3" (76mm) overall base height
- Polished aluminum



S4430-1 27.5" ALUMINUM BASE

- 27.5" (700mm) overall diameter
- 25.8" (656mm) caster socket diameter
- 2" (50mm) center hub
- 42mm caster barrels
- 7/16" x 1" (11x25mm) caster sockets
- 3.2" (80mm) overall base height
- Polished aluminum



S5262 27" ALUMINUM BASE w/ BLACK END CAPS

- 27" (690mm) overall diameter
- 25.6" (650mm) caster socket diameter
- 2" (50mm) center hub
- 38mm caster barrels
- 7/16" x 1" (11x25mm) caster sockets
- 3.8" (98mm) overall base height
- Polished aluminum with black plastic end caps



S4837-2 27.5" ALUMINUM BASE

- 27.5" (700mm) overall diameter
- 25.8" (656mm) caster socket diameter
- 2" (50mm) center hub
- 42mm caster barrels
- 7/16" x 1" (11x25mm) caster sockets
- 3.2" (80mm) overall base height
- Black



S3218-1 27" HIGH ARCHED ALUMINUM BASE

- 27" (680mm) overall diameter
- 26" (660mm) caster socket diameter
- 2" (50mm) center hub
- 23mm caster barrels
- 7/16" x 1" (11x25mm) caster sockets
- 5.6" (142mm) overall base height
- Polished aluminum
- Also available in black (S5491)



S4428 27" HIGH ARCHED ALUMINUM BASE

- 27" (686mm) overall diameter
- 25.9" (659mm) caster socket diameter
- 2" (50mm) center hub
- 26mm caster barrels
- 7/16" x 1" (11x25mm) caster sockets
- 4.8" (122mm) overall base height
- Polished aluminum
- Also available in black (S4617)



S4310 19" ARCHED ALUMINUM BASE

- 19.3" (489mm) overall diameter
- 17.7" (450mm) caster socket diameter
- 2" (50mm) center hub
- 40mm caster barrels
- 7/16" x .83" (11x21mm) caster sockets
- 2.3" (59mm) overall base height
- Polished aluminum
- Not intended for seating applications



S5257 28" ALUMINUM BASE

- 28" (710mm) overall diameter
- 27.2" (690mm) caster socket diameter
- 2" (50mm) center hub
- 20mm caster barrels
- 7/16" x 1" (11x25mm) caster sockets
- 2.75" (70mm) overall base height
- Polished aluminum



S3800B 27.5" ALUMINUM BASE

- 27.5" (700mm) overall diameter
- 25.8" (656mm) caster socket diameter
- 2" (50mm) center hub
- 44mm caster barrels
- 7/16" x 1" (11x25mm) caster sockets
- 3.2" (80mm) overall base height
- Brushed aluminum



S5197 20" ROUND ALUMINUM BASE

- 20" (503mm) overall diameter
- 2" (50mm) center hub
- 2.4" (62mm) overall base height
- 12 pre-installed black glides
- Polished aluminum



S5498 23.5" ARCHED ALUMINUM BASE

- 23.5" (600mm) overall diameter
- 22" (560mm) caster socket diameter
- 2" (50mm) center hub
- 42mm caster barrels
- 7/16" x 1" (11x25mm) caster sockets
- 3.2" (80mm) overall base height
- Polished top with unpainted underside



S5198 27.5" FLAT ALUMINUM BASE

- 27.5" (704mm) overall diameter
- 26" (660mm) caster socket diameter
- 2" (50mm) center hub
- 40mm caster barrels
- 7/16" x 1" (11x25mm) caster sockets
- 2.4" (62mm) overall base height
- Polished aluminum



S5469 22" STEEL SWIVEL BASE S5454 24" STEEL SWIVEL BASE S5471 25.5" STEEL SWIVEL BASE

- .75" steel tube ring
- Pre-installed 10.25" square swivel w/ 8" hole pattern (S1235-2)
- 65 3/8" ball bearings
- 9 non-marring black glides
- Black



S5441-A TABLE BASE

- 24" x 18"
- Accepts 50mm gas lift
- 1/4-20 threaded caster sockets
- Includes 4 black plastic plugs
- Black



S0003 50MM TWIN WHEEL HOODED CASTER

- 2" (50mm) wheel diameter
- 38mm barrel diameter
- 7/16" x 7/8" (11x22mm) wire grip ring stem
- Black



S3782 50MM TWIN SOFT WHEEL HOODED CASTER

- 2" (50mm) wheel diameter
- 38mm barrel diameter
- 7/16" x 7/8" (11x22mm) wire grip ring stem
- Soft tread for hard floors
- Black



S3253 50MM TWIN WHEEL HOODED CASTER

- 2" (50mm) wheel diameter
- 42mm barrel diameter
- 7/16" x 7/8" (11x22mm) wire grip ring stem
- Black



S2986 50MM TWIN SOFT WHEEL HOODED CASTER

- 2" (50mm) wheel diameter
- 42mm barrel diameter
- 7/16" x 7/8" (11x22mm) wire grip ring stem
- Soft tread for hard floors
- Black



S2227 50MM TWIN WHEEL HOODED CASTER

- 2" (50mm) wheel diameter
- 7/16" x 7/8" (11x22mm) wire grip ring stem
- Black



S3036 50MM TWIN SOFT WHEEL HOODED CASTER

- 2" (50mm) wheel diameter
- 7/16" x 7/8" (11x22mm) wire grip ring stem
- Soft tread for hard floors
- Black



S2421 50MM TWIN WHEEL HOODED CASTER w/ BRAKE

- 2" (50mm) wheel diameter
- 7/16" x 7/8" (11x22mm) wire grip ring stem
- Manual locking brake
- Black



S5420 50MM TWIN SOFT WHEEL HOODED CASTER w/ BRAKE

- 2" (50mm) wheel diameter
- 7/16" x 7/8" (11x22mm) wire grip ring stem
- Soft tread for hard floors
- Manual locking brake
- Black



S3940 50MM GRAY TWIN WHEEL HOODED CASTER

- 2" (50mm) wheel diameter
- 7/16" x 7/8" (11x22mm) wire grip ring stem
- Gray (color may vary slightly from picture)



S5224 50MM TWIN SOFT WHEEL NON-HOODED CASTER

- 2" (50mm) wheel diameter
- 7/16" x 7/8" (11x22mm) wire grip ring stem
- Soft tread for hard floors
- Black



S5415-1 50MM TWIN SOFT WHEEL HOODED CASTER w/ AUTO-LOCK OCCUPIED

- 2" (50mm) wheel diameter
- 7/16" x 7/8" (11x22mm) wire grip ring stem
- Locks when seat is occupied
- Soft tread for hard floors
- Black



S5500-1 50MM TWIN SOFT WHEEL HOODED CASTER w/ AUTO-LOCK UNOCCUPIED

- 2" (50mm) wheel diameter
- 7/16" x 7/8" (11x22mm) wire grip ring stem
- Locks when seat is unoccupied
- Soft tread for hard floors
- Black



S3939 50MM TWIN WHEEL CHROME HOODED CASTER

- 2" (50mm) wheel diameter
- 7/16" x 7/8" (11x22mm) wire grip ring stem
- Chrome hood
- Black wheels



S4129 50MM TWIN SOFT WHEEL CHROME HOODED CASTER

- 2" (50mm) wheel diameter
- 7/16" x 7/8" (11x22mm) wire grip ring stem
- Soft tread for hard floors
- Chrome hood
- Black wheels



S5306-1 50MM TWIN WHEEL BRASS HOODED CASTER

- 2" (50mm) wheel diameter
- 7/16" x 1" (11x25mm) brass grip ring stem
- Brass hood
- Black wheels



S5546 50MM TWIN SOFT WHEEL BRASS HOODED CASTER

- 2" (50mm) wheel diameter
- 7/16" x 1" (11x25mm) brass grip ring stem
- Soft tread for hard floors
- Brass hood
- Black wheels



S5352-1 50MM BALL CASTER w/ ANTIQUE BRASS HOOD

- 2" (50mm) ball diameter
- 7/16" x 7/8" (11x22mm) wire grip ring stem
- Antique brass hood
- Black PVC ball wheel



S5357-1 50MM BALL CASTER w/ ANTIQUE BRASS HOOD

- 2" (50mm) ball diameter
- 5/16" x 1-1/2" (8x38mm) metal stem
- For use with socket-style insert
- Works with S3272-1 plastic insert or S5356-1 metal insert
- Antique brass hood
- Black PVC ball wheel



S5539 50MM BALL CASTER w/ CHROME HOOD

- 2" (50mm) ball diameter
- 7/16" x 7/8" (11x22mm) wire grip ring stem
- Chrome hood
- Black PVC ball wheel



S5555 50MM BALL CASTER w/ CHROME HOOD

- 2" (50mm) ball diameter
- 5/16" x 1-1/2" (8x38mm) metal stem
- For use with socket-style insert
- Works with S3272-1 plastic insert or S5356-1 metal insert
- Chrome hood
- Black PVC ball wheel



S3207-1 50MM TWIN WHEEL BRASS HOODED CASTER

- 2" (50mm) wheel diameter
- 5/16" x 1-1/2" (8x38mm) metal stem
- For use with socket-style insert
- Works with S3272-1 plastic insert or S5356-1 metal insert
- Brass hood
- Black wheels



S5547 50MM TWIN SOFT WHEEL BRASS HOODED CASTER

- 2" (50mm) wheel diameter
- 5/16" x 1-1/2" (8x38mm) metal stem
- For use with socket-style insert
- Works with S3272-1 plastic insert or S5356-1 metal insert
- Soft tread for hard floors
- Brass hood
- Black wheels



S3131 50MM TWIN WHEEL HOODED CASTER

- 2" (50mm) wheel diameter
- 5/16" x 1-1/2" (8x38mm) metal stem
- For use with socket-style insert
- Works with S3272-1 plastic insert or S5356-1 metal insert
- Black



S5288 50MM TWIN SOFT WHEEL HOODED CASTER

- 2" (50mm) wheel diameter
- 5/16" x 1-1/2" (8x38mm) metal stem
- For use with socket-style insert
- Works with S3272-1 plastic insert or S5356-1 metal insert
- Soft tread for hard floors
- Black



S5421 50MM TWIN WHEEL HOODED CASTER w/ BRAKE

- 2" (50mm) wheel diameter
- 5/16" x 1-1/2" (8x38mm) metal stem
- For use with socket-style insert
- Works with S3272-1 plastic insert or S5356-1 metal insert
- Manual locking brake
- Black



S5422 50MM TWIN SOFT WHEEL HOODED CASTER w/ BRAKE

- 2" (50mm) wheel diameter
- 5/16" x 1-1/2" (8x38mm) metal stem
- For use with socket-style insert
- Works with S3272-1 plastic insert or S5356-1 metal insert
- Soft tread for hard floors
- Manual locking brake
- Black



S5381-1 50MM TWIN WHEEL HOODED CASTER w/ THREADED STEM

- 2" (50mm) wheel diameter
- 1/4-20 x 3/4" threaded stem
- Black



S5354-1 50MM TWIN WHEEL HOODED CASTER w/ THREADED STEM

- 2" (50mm) wheel diameter
- 5/16-18 x 3/4" threaded stem
- Black



S3420 50MM TWIN WHEEL HOODED CASTER w/ MOUNTING PLATE

- 2" (50mm) wheel diameter
- 1" x 1" (25.4x25.4mm) plate mounting holes
- Overall plate size is 1.5" x 1.5"
- Black



S5382 50MM TWIN SOFT WHEEL HOODED CASTER w/ 3/8" x 1" STEM

- 2" (50mm) wheel diameter
- Specialty 3/8" x 1" (10x25mm) grip ring stem
- Soft tread for hard floors
- Black



S1435 55MM TWIN WHEEL HOODED CASTER

- 2.2" (55mm) wheel diameter
- 45mm barrel diameter
- 7/16" x 7/8" (11x22mm) wire grip ring stem
- Black



S4015 55MM TWIN SOFT WHEEL HOODED CASTER

- 2.2" (55mm) wheel diameter
- 45mm barrel diameter
- 7/16" x 7/8" (11x22mm) wire grip ring stem
- Soft tread for hard floors
- Black



S5490 55MM HEAVY DUTY TWIN WHEEL HOODED CASTER

- 2.2" (55mm) wheel diameter
- 38mm barrel diameter
- 7/16" x 7/8" (11x22mm) wire grip ring stem
- Heavy duty - 100 lb. capacity per caster
- Black



S3710 60MM TWIN WHEEL HOODED CASTER

- 2.4" (60mm) wheel diameter
- 7/16" x 7/8" (11x22mm) wire grip ring stem
- Black



S2333 60MM TWIN SOFT WHEEL HOODED CASTER

- 2.4" (60mm) wheel diameter
- 7/16" x 7/8" (11x22mm) wire grip ring stem
- Soft tread for hard floors
- Black



S4482 60MM TWIN WHEEL NON-HOODED CASTER

- 2.4" (60mm) wheel diameter
- 7/16" x 7/8" (11x22mm) wire grip ring stem
- Black



S4483 60MM TWIN SOFT WHEEL NON-HOODED CASTER

- 2.4" (60mm) wheel diameter
- 7/16" x 7/8" (11x22mm) wire grip ring stem
- Soft tread for hard floors
- Black



S4655 65MM TWIN WHEEL NON-HOODED CASTER

- 2.6" (65mm) wheel diameter
- 7/16" x 7/8" (11x22mm) wire grip ring stem
- Spoke-style wheels
- Black



S5110 75MM TWIN WHEEL NON-HOODED CASTER

- 3" (75mm) wheel diameter
- 7/16" x 7/8" (11x22mm) wire grip ring stem
- Black



S5111 75MM TWIN SOFT WHEEL NON-HOODED CASTER

- 3" (75mm) wheel diameter
- 7/16" x 7/8" (11x22mm) wire grip ring stem
- Soft tread for hard floors
- Black



S5112 75MM TWIN WHEEL NON-HOODED CASTER w/ BRAKE

- 3" (75mm) wheel diameter
- 7/16" x 7/8" (11x22mm) wire grip ring stem
- Manual locking brake
- Black



S5113 75MM TWIN SOFT WHEEL NON-HOODED CASTER w/ BRAKE

- 3" (75mm) wheel diameter
- 7/16" x 7/8" (11x22mm) wire grip ring stem
- Soft tread for hard floors
- Manual locking brake
- Black



**S4811 75MM TWIN WHEEL
NON-HOODED CASTER w/
MOUNTING PLATE**

- 3" (75mm) wheel diameter
- 1" (25.4x25.4mm) plate mounting holes
- Overall plate size is 1.5" x 1.5"
- Black



**S4812 75MM TWIN SOFT WHEEL
NON-HOODED CASTER w/
MOUNTING PLATE**

- 3" (75mm) wheel diameter
- Soft tread for hard floors
- 1" (25.4x25.4mm) plate mounting holes
- Overall plate size is 1.5" x 1.5"
- Black



**S4817 75MM TWIN WHEEL
NON-HOODED CASTER w/
MOUNTING PLATE**

- 3" (75mm) wheel diameter
- 1" (25.4x25.4mm) plate mounting holes
- Overall plate size is 1.5" x 1.5"
- Manual locking brake
- Black



**S4818 75MM TWIN SOFT WHEEL
NON-HOODED CASTER w/
BRAKE AND MOUNTING PLATE**

- 3" (75mm) wheel diameter
- Soft tread for hard floors
- 1" (25.4x25.4mm) plate mounting holes
- Overall plate size is 1.5" x 1.5"
- Manual locking brake
- Black



S5478 100MM SINGLE WHEEL CASTER w/ PLATE, RIGID

- 4" (100mm) wheel diameter
- Thermoplastic rubber (TPR) non-marking wheel
- 3" x 1.75" (76.2x44.4mm) plate mounting holes
- Overall plate size is 3.125" x 4"



S5479 100MM SINGLE WHEEL CASTER w/ PLATE, SWIVEL

- 4" (100mm) wheel diameter
- Thermoplastic rubber (TPR) non-marking wheel
- 3" x 1.75" (76.2x44.4mm) plate mounting holes
- Overall plate size is 3.125" x 4"
- Caster rotates 360° on full race of steel ball bearings



S5362 GLIDE

- 7/16" x 7/8" (11x22mm) wire grip ring stem
- 1.4" (35mm) diameter
- .6" (15mm) glide height
- Nylon bottom with steel upper



S5363 GLIDE

- 7/16" x 7/8" (11x22mm) wire grip ring stem
- 1.4" (35mm) diameter
- .6" (16mm) glide height
- Thermoplastic rubber (TPR) non-skid, non-marking bottom
- Black steel upper



S4342 GLIDE

- 7/16" x 1" (11x25mm) wire grip ring stem
- 1.7" (42mm) bottom diameter
- .5" (13mm) glide height
- Nylon bottom with steel upper



S0005 BELL GLIDE

- 7/16" x 7/8" (11x22mm) wire grip ring stem
- .8" (21mm) top diameter
- 2" (50mm) bottom diameter
- 1.2" (31mm) bell height
- Black



S4487 SHORT OFFICE CHAIR GLIDE

- 7/16" x 7/8" (11x22mm) wire grip ring stem
- 1.6" (40mm) top diameter
- 1.9" (49mm) bottom diameter
- 1.4" (35mm) glide height
- Black



S0007-1 HIGH PROFILE BELL GLIDE

- 7/16" x 7/8" (11x22mm) wire grip ring stem
- 1.3" (34mm) top diameter
- 2.1" (54mm) bottom diameter
- 2.2" (56mm) glide height
- Black



S5477 GLIDE

- .35" OD x .1875" steel ring taps into wooden furniture
- .4" (10mm) glide height
- .9" (23mm) bottom diameter
- Brown polypropylene with felt base



S5450 GLIDE

- 11/16" (17.5mm) long nail
- .4" (10mm) glide height
- 1" (25.4mm) bottom diameter
- Black poly cushion with steel base



S5453 1/4-20 x 1/2" THREADED GLIDE

- .6" (15mm) glide height
- 1" (25.4mm) bottom diameter
- Leveling foot with articulation
- Natural HDPE base with steel cover shell



S5452 1/4-20 x 1/2" THREADED GLIDE

S5472 5/16-18 x 1" THREADED GLIDE

- .4" (10mm) glide height
- 1" (25.4mm) bottom diameter
- Black HDPE base



S3272-1 PLASTIC SOCKET INSERT FOR CASTER STEM

- 1.6" (41mm) length
- .5" (12mm) outside diameter
- .9" (24mm) overall diameter at bottom
- Works with 5/16" x 1-1/2" (8x38mm) caster stems
- Tan



S5356-1 STEEL SOCKET INSERT FOR CASTER STEM

- 1.2" (30mm) length
- .4" (10mm) outside diameter
- .75" (19mm) overall diameter at bottom
- Works with 5/16" x 1-1/2" (8x38mm) caster stems
- Serrated end for installation in wood furniture



S4167-3 18" CHROME FOOT RING

- 18" diameter
- 50mm hub diameter
- .75" chrome steel ring
- Black aluminum spokes
- Hand wheel for height adjustment
- Available in ESD (S4167-3-ESD) and with 45mm hub (S5540)



S4165-3 20" CHROME FOOT RING

- 20" diameter
- 50mm hub diameter
- .75" chrome steel ring
- Black aluminum spokes
- Hand wheel for height adjustment
- Available in ESD (S4165-3-ESD)



S5093 18" OVAL-TUBE, TWIST-LOCK FOOT RING

- 18" diameter
- 50mm hub diameter
- Chrome steel ring
- Black aluminum spokes
- Twist-lock hub for height adjustment
- Oval tube



S5467 18" PRESS-LOCK FOOT RING

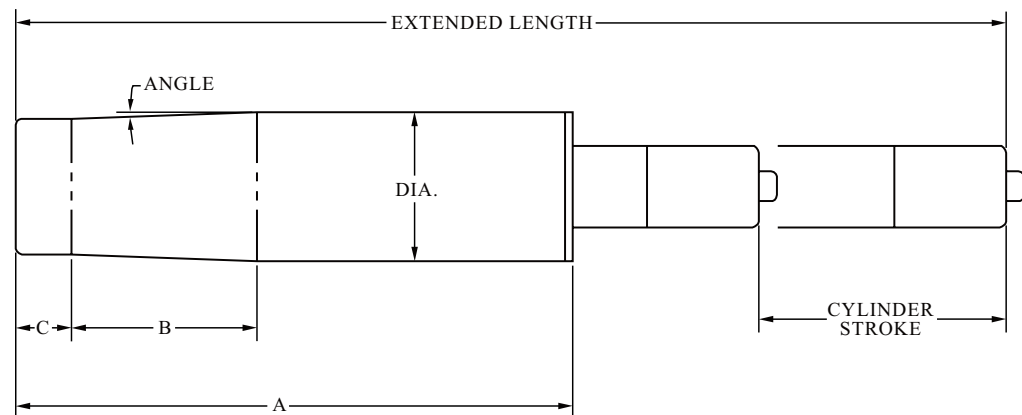
- 18" diameter
- 50mm hub diameter
- Chrome steel ring
- Black aluminum spokes
- Press-lock hub for height adjustment



S5495 20" PRESS-LOCK FOOT RING

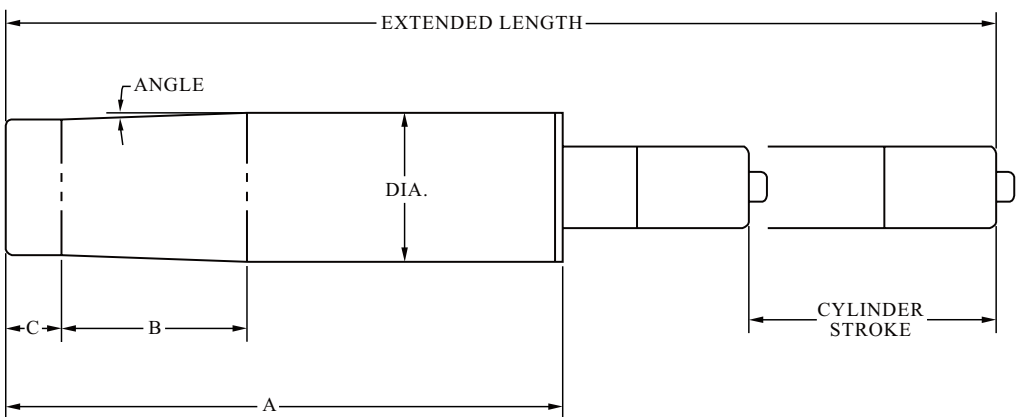
- 20" diameter
- 50mm hub diameter
- Chrome steel ring
- Black aluminum spokes
- Press-lock hub for height adjustment





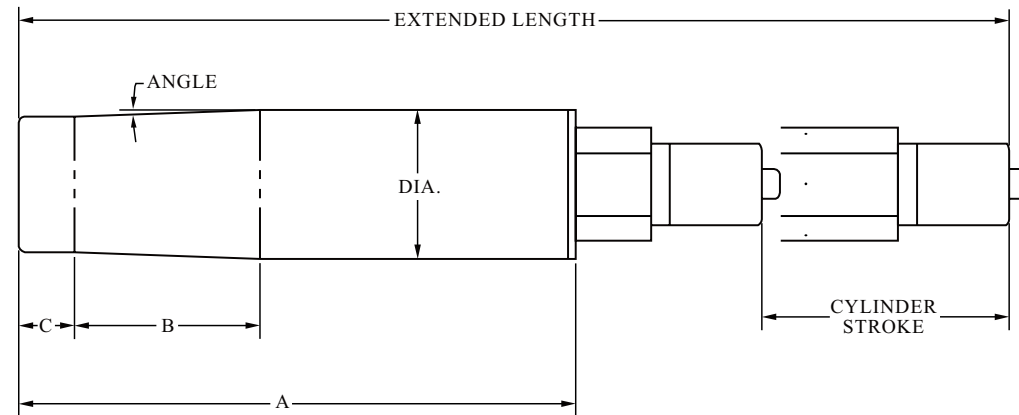
Part #	Stroke	Extended Length	Dia.	A	B	C	U/S Tube	Force (Newtons)	Color
S6124	80	282	50	160	55	42	185	400N	Black
S6123	80	282	50	160	55	55	185	400N	Black
S6103	80	307	50	185	55	25	210	400N	Black
S6104	80	307	50	185	55	42	210	400N	Black
S6105	80	307	50	185	55	55	210	400N	Black
S6144-1	100	342	45	185	55	25	225	400N	Black
S6209	100	342	50	195	55	25	225	400N	Chrome
S6106	100	342	50	195	55	25	225	400N	Black
S6106-HD	100	342	50	195	55	25	225	500N	Black
S6107	100	342	50	195	55	42	225	400N	Black
S6107-HD	100	342	50	195	55	42	225	500N	Black
S6166-HD	100	342	50	195	55	55	225	500N	Black
S6143	125	365	50	195	55	55	225	400N	Black
S6143-HD	125	365	50	195	55	55	225	500N	Black
S6165	130	392	50	215	55	42	247	300N	Black
S6165-HD	130	392	50	215	55	42	247	500N	Black
S6110	140	415	50	235	65	0	259	300N	Chrome
S6239	140	415	50	235	65	0	259	300N	Black
S6133	140	415	50	235	55	25	259	300N	Chrome
S6111	140	415	50	235	55	25	259	300N	Black
S6111-HD	140	415	50	235	55	25	259	450N	Black
S6112	140	415	50	235	55	42	259	300N	Black
S6112-HD	140	415	50	235	55	42	259	450N	Black
S6195	140	405	50	215	55	60	248	400N	Black
S6195-HD	140	405	50	215	55	60	248	500N	Black

Please call for other available sizes or with your custom needs.



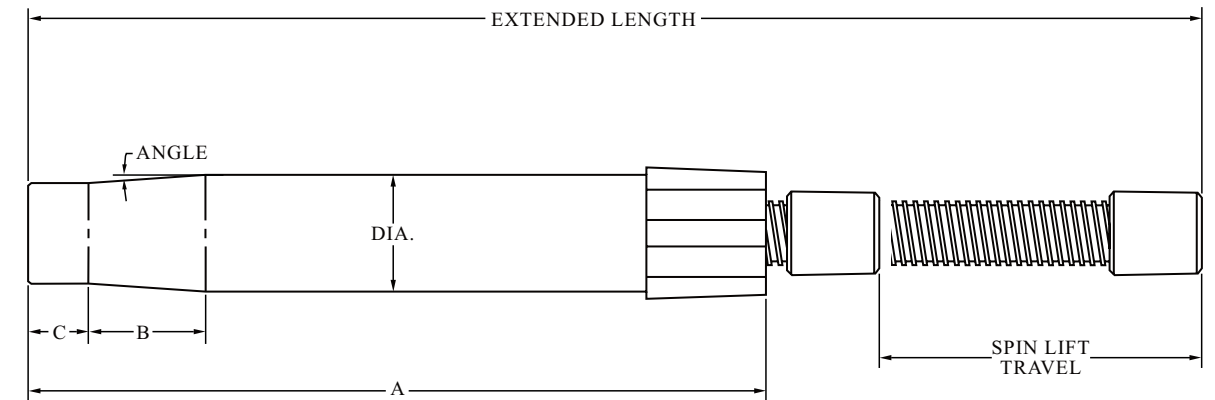
Part #	Stroke	Extended Length	Dia.	A	B	C	U/S Tube	Force (Newtons)	Color
S6204	175	490	50	255	65	0	300	400N	Chrome
S6213	175	490	50	255	55	25	300	300N	Black
S6114	200	565	50	315	65	0	350	300N	Chrome
S6155	200	565	50	315	65	0	350	300N	Black
S6132	200	565	50	315	55	25	350	300N	Chrome
S6115	200	565	50	315	55	25	350	300N	Black
S6115-HD	200	565	50	315	55	25	350	450N	Black
S6117	200	565	50	315	55	42	350	300N	Chrome
S6198	270	690	45	390	65	0	405	150N	Chrome
S6238	270	690	45	390	65	0	405	150N	Black
S6212	270	708	50	370	65	0	420	300N	Chrome
S6184	270	708	50	370	55	25	420	300N	Chrome
S6120	270	708	50	370	55	25	420	300N	Black
S6120-HD	270	708	50	370	55	25	420	450N	Black

Please call for other available sizes or with your custom needs.



Part #	Stroke	Extended Length	Dia.	A	B	C	U/S Tube	Force (Newtons)	Color
S6148	140	415	50.8	235	81	10	259	300N	Black
S6136	270	708	50.8	385	81	10	420	200N	Black
S6142	270	708	50.8	385	81	10	420	300N	Black
S6188	270	708	50.8	385	81	10	420	150N	Black

Please call for other available sizes or with your custom needs.



Part #	Travel (Stroke)	Extended Length	Dia.	A	B	C	Color
S3999-5	120	393	50	230	50	38	Black
S4667-2	200	590	50	350	50	38	Chrome

- Manual height adjustment
- Internal cam allows for full rotation without height adjustment
- To raise and lower, hold center bushing while rotating spindle
- Top taper works with standard mechanisms and top plates

Please call for other available sizes or with your custom needs.

S4277-2 SMALL TELESCOPING LIFT COVER

- Fits standard top taper of gas cylinder
- 2.6" (65mm) height when fully compressed
- 7.6" (192mm) height when fully extended
- Black



S4184-2 MEDIUM TELESCOPING LIFT COVER

- Fits standard top taper of gas cylinder
- 3.4" (86mm) height when fully compressed
- 10" (256mm) height when fully extended
- Black



S1777-1 LARGE TELESCOPING LIFT COVER

- Fits standard top taper of gas cylinder
- 4.5" (115mm) height when fully compressed
- 13.2" (335mm) height when fully extended
- Black



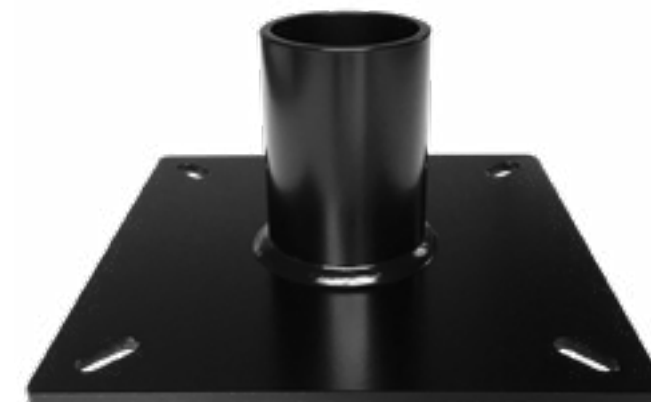
S4755 ALUMINUM RELEASE BLOCK

- Accepts standard top taper of gas cylinder
- 3" (76mm) square block
- 2.1" (54mm) square mounting hole pattern
- Also available in black painted finish
- Shown with optional gas cylinder activation lever (S4789-A3)



S5433-A PEDESTAL PLATE

- Accepts 50mm gas cylinder
- 6.875" (175mm) square plate
- 5.5" (140mm) square mounting hole pattern
- Black



S4650 FLAT SEAT PLATE

- Accepts standard gas cylinder
- 6.6" (168mm) square plate
- 5.375" (137mm) square mounting hole pattern
- Lever for gas cylinder activation
- Flat
- Black



S4239 PITCHED SEAT PLATE

- Accepts standard gas cylinder
- 6.6" (168mm) square plate
- 5.375" (137mm) square mounting hole pattern
- Lever for gas cylinder activation
- 3° pitch
- Black



S4132 PITCHED SEAT PLATE

- Accepts standard gas cylinder
- 7" x 8" (178x203mm) plate
- 6" x 7" (152x178mm) mounting hole pattern
- Lever for gas cylinder activation
- 3° pitch
- Black



S3974 FLAT SEAT PLATE

- Accepts standard gas cylinder
- Lever for gas cylinder activation
- Accepts 2.25" wide back upright
- Works with S4513-5 back upright
- Threaded hand wheel holds back upright in place
- Flat
- Black



S2886 PITCHED SEAT PLATE

- Accepts standard gas cylinder
- Lever for gas cylinder activation
- Accepts 2.25" wide back upright
- Works with S4513-5 back upright
- Threaded hand wheel holds back upright in place
- 2° pitch
- Black



S2979 TILT CONTROL MECHANISM

- Accepts standard gas cylinder
- Lever for gas cylinder activation
- Tilt lock feature - push lever to lock - pull to unlock
- Hand wheel for tilt tension adjustment
- Black



S2979-HD HEAVY DUTY TILT CONTROL MECHANISM

- Accepts standard gas cylinder
- Lever for gas cylinder activation
- Tilt lock feature - push lever to lock - pull to unlock
- Hand wheel for tilt tension adjustment
- Black



S4389 TILT CONTROL MECHANISM WITHOUT LEVER

- Accepts standard gas cylinder
- Popular for fixed height applications
- Hand wheel for tilt tension adjustment
- Black



S4264 TILT CONTROL MECHANISM

- Accepts standard gas cylinder
- Lever for gas cylinder activation
- Tilt lock feature - push lever to lock - pull to unlock
- Hand wheel for tilt tension adjustment
- Black



S4567 TILT CONTROL MECHANISM WITHOUT LEVER

- Accepts standard gas cylinder
- Popular for fixed height applications
- Hand wheel for tilt tension adjustment
- Black



S4401 SEAT SLIDER

- Lever for activation
- 9.5" x 10.5" (241x267mm) overall size
- Works with S3608 mechanism
- Black



S4388 KNEE TILT CONTROL MECHANISM

- Accepts standard gas cylinder
- Lever for gas cylinder activation
- Tilt lock feature - push lever to lock - pull to unlock
- Hand wheel for tilt tension adjustment
- Black



S4093-3 BACK TILT CONTROL MECHANISM

- Accepts standard gas cylinder
- Lever for gas cylinder activation
- Lever for back tilt function
- Works with S4683 back upright
- Black



S3608 SEAT & BACK TILT CONTROL MECHANISM

- Accepts standard gas cylinder
- Lever for gas cylinder activation
- Lever for back tilt function - locks in any position
- Lever for seat tilt function - locks in any position
- Lever for forward seat tilt function
- Hand wheel for tilt tension adjustment
- Accepts Euro-style back upright
- Works with S4139 back upright
- Black



S4400 SEAT & BACK TILT CONTROL MECHANISM w/ SEAT SLIDER

- Accepts standard gas cylinder
- Lever for gas cylinder activation
- Lever for back tilt function - locks in any position
- Lever for seat tilt function - locks in any position
- Lever for forward seat tilt function
- Lever for seat slide function
- Hand wheel for tilt tension adjustment
- Accepts Euro-style back upright
- Works with S4139 back upright
- Black



S4118 BACK TILT CONTROL MECHANISM

- Accepts standard gas cylinder
- Lever for gas cylinder activation
- Lever for back tilt function - locks in any position
- Accepts straight 2.25" wide back upright
- Works with S5031-A, S4623, and S4793-2 back upright
- Black



S4386 SEAT & BACK TILT CONTROL MECHANISM

- Accepts standard gas cylinder
- Lever for gas cylinder activation
- Lever for seat/back tilt function - locks in any position
- Accepts straight 2.25" wide back upright
- Works with S5031-A, S4623, and S4793-2 back upright
- Black



S4149 SEAT & BACK TILT CONTROL MECHANISM

- Accepts standard gas cylinder
- Lever for gas cylinder activation
- Lever for back tilt adjustment - locks in any position
- Lever for seat tilt adjustment - locks in any position
- Accepts straight 2.25" wide back upright
- Works with S5031-A, S4623, and S4793-2 back upright
- Black



S4369 BACK TILT CONTROL MECHANISM

- Accepts standard gas cylinder
- Lever for gas cylinder activation
- Lever for back tilt function - locks in any position
- Accepts Euro-style back upright
- Works with S4139 back upright
- Black



S4415 SEAT & BACK TILT CONTROL MECHANISM

- Accepts standard gas cylinder
- Lever for gas cylinder activation
- Lever for seat/back tilt function - locks in any position
- Accepts Euro-style back upright
- Works with S4139 back upright
- Black



S4370 SEAT & BACK TILT CONTROL MECHANISM

- Accepts standard gas cylinder
- Lever for gas cylinder activation
- Lever for back tilt adjustment - locks in any position
- Lever for seat tilt adjustment - locks in any position
- Accepts Euro-style back upright
- Works with S4139 back upright
- Black



S4857-A6 FLAT SEAT PLATE

- Accepts 50mm gas cylinder
- Accepts 2.25" wide back uprights
- Works with S4513-5 back upright
- Threaded hand wheel holds back upright in place
- Flat
- Black



FOOT ACTIVATED CYLINDER RELEASE KIT

Counter-clockwise from top left:

- Assembled kit with optional S4154 base and S4857-A6 seat plate
- S291 - 11" foot ring
- S290-2 - 50mm to 17-4 adapter
- S5296-A2 - Parts Pack: 3 stop bolts, 3 washers, 1 spring, 1 pin, 1 rubber washer, and 1 column cover
- Column available in multiple lengths and finishes
- Works with most 50mm bases and gas cylinders



616-245-5447 | info@sourcedist.com
www.sourcedist.com

S1235-2 10.25" FLAT SWIVEL

- 10.25" square plate
- 8" hole pattern with .25" x .375" rectangular holes
- 360° rotation
- Shown below with optional ring base
- Black



S5428 SWIVEL ROCKER BOX

- 9.375" x 7.75" fixed top plate
- 7.5" square swivel bottom plate
- 5.5" mounting hole pattern with 0.75" oval holes on swivel plate
- Heavy-duty springs for rocking motion
- Raw
- Also available in black (S5428-BK)



616-245-5447 | info@sourcedist.com
www.sourcedist.com

S4694 6.25" PITCHED SWIVEL

- 6.25" square plate
- 5" - 5.5" mounting hole pattern with 0.75" oval holes
- 360° rotation
- 3° pitch
- Raw



S4695 6.25" FLAT SWIVEL

- 6.25" square plate
- 5" - 5.5" mounting hole pattern with 0.75" oval holes
- 360° rotation
- Flat
- Raw



S4696 7" PITCHED SWIVEL

- 7" square plate
- 5.25" - 5.75" mounting hole pattern with 0.75" oval holes
- 360° rotation
- 3° pitch
- Raw



S4697 7" FLAT SWIVEL

- 7" square plate
- 5.25" - 5.75" mounting hole pattern with 0.75" oval holes
- 360° rotation
- Flat
- Raw



S4938 7" PITCHED AUTO RETURN SWIVEL

- 7" square plate
- 5.25" - 5.75" mounting hole pattern with 0.75" oval holes
- Auto return brings swivel back to center
- Rubber coated internal stops
- 200° rotation
- 3° pitch
- Raw



S4760 7" FLAT AUTO RETURN SWIVEL

- 7" square plate
- 5.25" - 5.75" mounting hole pattern with 0.75" oval holes
- Auto return brings swivel back to center
- Rubber coated internal stops
- 200° rotation
- Flat
- Raw



S5446 6.75" PITCHED SWIVEL w/ ROUND BOTTOM PLATE

- 6.75" square top plate
- 5.25" - 5.875" mounting hole pattern with 0.75" oval holes
- 2.5" square mounting hole pattern with 1/4-20 threaded holes on bottom plate
- 360° rotation
- 3° pitch
- Raw



S5447 6.75" FLAT SWIVEL w/ ROUND BOTTOM PLATE

- 6.75" square top plate
- 5.25" - 5.875" mounting hole pattern with 0.75" oval holes
- 2.5" square mounting hole pattern with 1/4-20 threaded holes on bottom plate
- 360° rotation
- Flat
- Raw



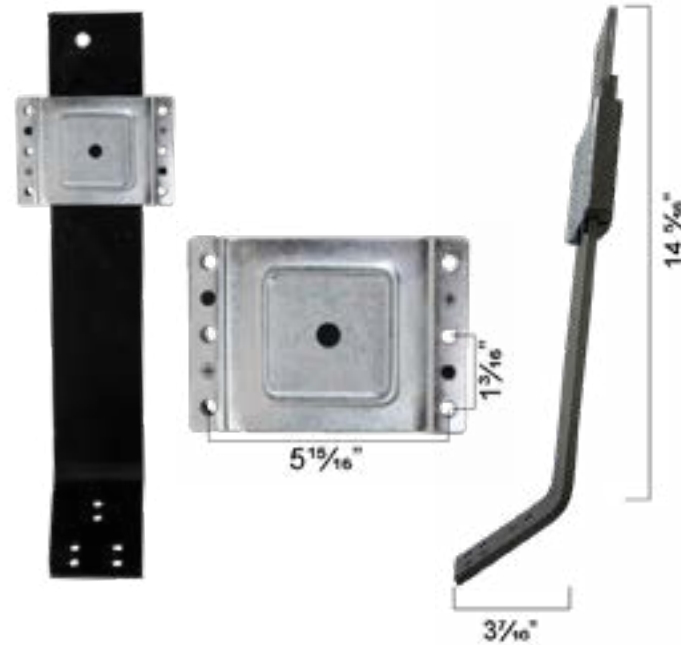
S5597 8" SQUARE FLAT SWIVEL

- 8" square plate
- 5.25" - 6" mounting hole patterns with 1" oval holes
- 360° rotation
- Flat
- Black finish



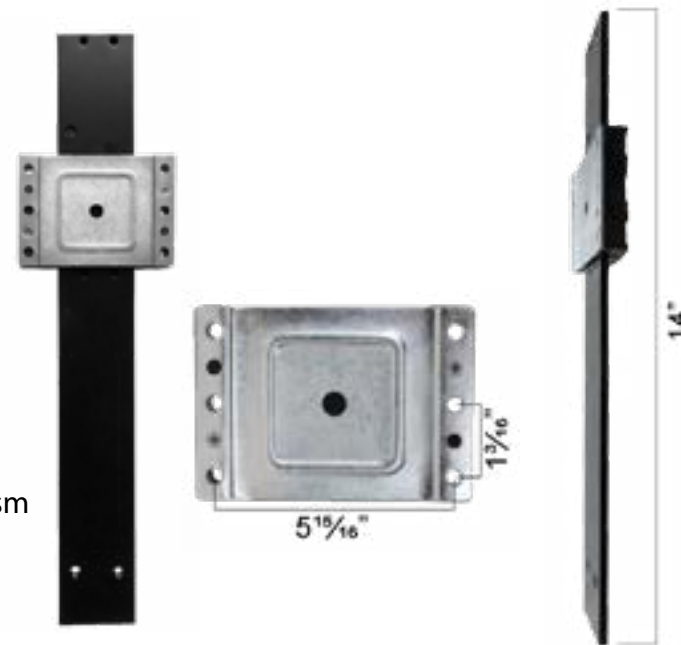
S4139 ADJUSTABLE BACK UPRIGHT

- 2.75" wide
- 0.25" thick
- 3.25" ratchet height adjustment
- 130° angle
- 6 - 8mm threaded holes
- Accepted into Euro-style mechanisms
- Works with S3608, S4369, S4370, S4400, and S4415 mechanism
- Black



S4623 ADJUSTABLE BACK UPRIGHT

- 2.25" wide
- 0.25" thick
- 3.25" ratchet height adjustment
- Flat
- 2 - 8mm threaded holes
- Works with S4118, S4149, and S4386 mechanism
- Black



S4793-2 BACK UPRIGHT

- 2.25" wide
- 0.25" thick
- 172° bend
- Works with S4118, S4386, and S4149 mechanism
- Black



S4513-5 BACK UPRIGHT

- 2.25" wide
- 0.25" thick
- 3.125" horizontal slot and 3.875" vertical slot
- Works with S2492-A3 hinge and S2886, S3974, S4857-A6 mechanism
- Black



S5031-A RAW BACK UPRIGHT STOCK

- 2.25" wide
- 0.25" thick
- 20" long
- Bottom hole for plastic stopper (included)
- Works with S4118, S4386, and S4149 mechanism
- Flat
- Raw



S4683 BACK UPRIGHT

- 49.5mm wide
- 6mm thick
- Plastic insert for back height adjustment
- Works with S4093-3 mechanism
- Black



S5464 SADDLE SEAT

- Polyurethane
- 13.4" x 16.5" overall size
- 3.7" (95mm) and 5.3" (135mm) square mounting hole patterns
- Black



S3069-2 PLYWOOD SEAT PAN

- 18.5" wide x 16.75" deep (470x425.45mm)
- 7-ply upholstery-grade plywood
- Works with most stock mechanisms and S2877 arms
- Waterfall front edge



S5532 SEAT w/ INTEGRATED BACK

- Polyurethane
- 13.75" x 13.4" overall size
- 4" (100mm) square mounting hole pattern
- Black



S5551 ROUND SEAT

- Polyurethane
- 13.6" diameter
- 5.4" (138mm) square mounting hole pattern
- Black



73464-1 SMALL BACK PAN SET

- 11.25" tall x 15.5" wide (285x395mm)
- Set includes inner and outer piece
- Inner piece is 3/8" 5-ply upholstery-grade plywood
- Outer piece is 3/16" 3-ply upholstery-grade plywood
- Accepts S4513-5 back upright with S2492-A3 hinge



73624-1 LARGE BACK PAN SET

- 14.5" tall by 16" wide (368x406mm)
- Set includes inner and outer piece
- Inner piece is 3/8" 5-ply upholstery-grade plywood
- Outer piece is 3/16" 3-ply upholstery-grade plywood
- Accepts S4513-5 back upright with S2492-A3 hinge



SO5013 PLASTIC BACK OUTER - EXTRA SMALL

- 10.25" tall x 16" wide (265x400mm)
- Pairs with SI5012-1 plastic back inner - snaps into place
- Contoured shape
- Black



SI5012-1 PLASTIC BACK INNER - EXTRA SMALL

- 10.25" tall x 16" wide (258x390mm)
- Pairs with SO5013 plastic back outer - snaps into place
- 25x36mm mounting hole pattern with T-nuts
- Contoured shape
- Upholstery ready
- Black



SO4960 PLASTIC BACK OUTER - SMALL

- 15" tall x 16.75" wide (382x426mm)
- Pairs with SI4957 plastic back inner - snaps into place
- Contoured shape
- Black



SI4957 PLASTIC BACK INNER - SMALL

- 15" tall x 16.75" wide (382x426mm)
- Pairs with SO4960 plastic back outer - snaps into place
- 30x100mm and 60x100mm mounting hole pattern
- Contoured shape
- Upholstery ready
- Black



SO4959 PLASTIC BACK OUTER - MEDIUM

- 19" tall x 17.5" wide (492x442mm)
- Pairs with SI4956 plastic back inner - snaps into place
- Contoured shape
- Black



SI4956 PLASTIC BACK INNER - MEDIUM

- 19" tall x 17" wide (492x442mm)
- Pairs with SO4959 plastic back outer - snaps into place
- 30x100mm and 60x100mm mounting hole pattern
- Contoured shape
- Upholstery ready
- Black



SO4958 PLASTIC BACK OUTER - LARGE

- 22.5" tall x 19.5" wide (570x494mm)
- Pairs with SI4955 plastic back inner - snaps into place
- Contoured shape
- Black



SI4955 PLASTIC BACK INNER - LARGE

- 22.5" tall x 18.5" wide (570x494mm)
- Pairs with SO4958 plastic back outer - snaps into place
- 30x100mm and 60x100mm mounting hole pattern
- Contoured shape
- Upholstery ready
- Black



S4610-WS-1 SIDE CHAIR WITHOUT ARMS

- Includes frame, seat, back, foam, and fasteners
- 1/4-20 T-Nuts pre-installed on seat and back
- Rear legs angled for wall saver feature
- Ships individually and disassembled
- Upholstery ready
- Available with pre-installed leveling glides (S4610-WS-2)



S4612-WS-1 SIDE CHAIR WITH ARMS

- Includes frame, seat, back, foam, and fasteners
- 1/4-20 T-Nuts pre-installed on seat and back
- Rear legs angled for wall saver feature
- Ships individually and disassembled
- Upholstery ready
- Available with pre-installed leveling glides (S4612-WS-2)



S2257-2 STEEL HUB

- 2.25" (57mm) tall
- 50mm tapered steel hub
- Accepts standard 50mm gas cylinders
- Unfinished steel



S633 ADAPTER BUSHING

- 2.25" (57mm) tall
- Converts 50mm bases to accept 45mm gas cylinders
- Black
- Available in gray (S633-G)



S4334-1 ADAPTER BUSHING

- 1.875" (48mm) tall
- Converts 50mm bases to accept 1" column
- Not intended for seating applications
- Black



S4006-2A EXTENSION TUBE

- 6" between tapers
- Adds height between base and gas cylinder
- Works with 50mm components
- Black
- Also available in other sizes and finishes



S4451-K GAS CYLINDER HARDWARE KIT

- Qty: 1 Rubber Bumper - S4595
- Qty: 2 Black Washers - S4597
- Qty: 1 White Bearing - S4596
- Qty: 1 Silver Washer- S4594
- Qty: 1 Clip - S4565



S4789-A3 LEVER w/ PLASTIC HANDLE

- 8" (206mm) long lever
- 8mm diameter lever
- Includes lever (S4788-A1) and handle (S4358-1)
- Shown with optional gas cylinder release activation block (S4755)
- Custom lengths available



S3825-1 PLASTIC HANDLE

- 4.1" (106mm) long
- 2" (50mm) wide
- Accepts 5/16" (8mm) lever
- Black



S5465 PLASTIC HANDLE

- 3.5" (89mm) long
- 1.6" (41mm) wide
- Accepts 5/16" (8mm) lever
- Black



S4358-1 PLASTIC HANDLE

- 2" (50mm) long
- .7" (17mm) wide
- Accepts 5/16" (8mm) lever
- Black



S5140 PLASTIC SPACER

- .25" (6.5mm) inner diameter
- .5" (13mm) outer diameter
- .3" (8mm) height
- Black



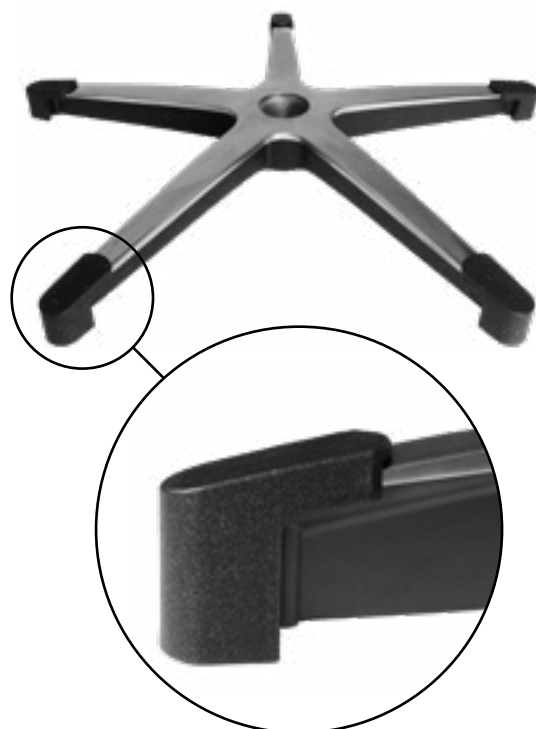
S4759-1 PLASTIC SPACER

- .3" (8.3mm) inner diameter
- .7" (19mm) outer diameter
- .4" (10mm) height
- Black



S4627-2 PLASTIC CAP

- Works with S4154, S4050, S4266, S5066, and S5067 bases
- Snaps into place
- Black



S2492-A3 HINGE BRACKET

- Attaches to back upright to allow vertical adjustment of chair back
- Works with S4513-5 back upright
- S5218-A - Stamped outer hinge
- S4964-A1 - Inner hinge, zinc
- S5212 - Hand wheel
- S5213 - Bolt
- S4939-2 - Conical washer
- S4940-2 - Lock washer
- S5018 - Spring
- Black



S4097-A1 HINGE BRACKET

- Outer hinge can be welded to back upright
- Works with S5030-A back upright
- S4964-A1 - Inner hinge, zinc
- S4197 - Outer hinge, raw
- S5018 - Spring



S4520-1 LUMBAR SUPPORT

- 40mm stroke / extension of lumbar
- 350mm cable
- 35mm hand wheel
- Also available with 380mm, 520mm, or 723mm cable length

